

CAR / SUV / 4X4 / LIGHT TRUCK

# WINTER TYRES 2024 / 2025



**FALKEN**

# CONTENTS

PAGE 3	THE FALKEN BRAND
PAGE 4	OUR SUCCESSES
PAGE 5	MADE FOR WINTER ROAD CONDITIONS
PAGE 6	5-YEAR FALKEN GUARANTEE
PAGE 7	CAR AND SUV WINTER TYRES
PAGE 7	EUROWINTER HS02 PRO
PAGE 10	EUROWINTER HS02
PAGE 12	EUROWINTER HS01
PAGE 13	EUROWINTER HS01 RUNFLAT
PAGE 14	LIGHT TRUCK WINTER TYRES
PAGE 14	EUROWINTER VAN01
PAGE 16	SUSTAINABILITY
PAGE 18	PRODUCT DETAILS – HIGHLIGHTS
PAGE 22	EU LABELLING
PAGE 23	OE AND OEM PARTNERSHIPS

# THE FALKEN BRAND

The immense potential of Falken's tyres is created by the latest development technologies, state-of-the-art engineering facilities, test tracks throughout the world that replicate all major road and weather conditions as well as international know-how honed by more than one hundred years of manufacturing tyres. The Falken brand was established in 1983 in its home country of Japan, initially as a flagship brand of high-performance radial tyres. Today, more than four decades later, Falken offers quality products throughout Europe that stand for the highest level of performance, innovation and driving pleasure.

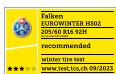


## OUR SUCCESSES

The high quality of our tyre products is confirmed to us over and over again – by our many satisfied customers, but also by the high scores and positive results from a host of independent tyre tests. This information delivers constant endorsement that Falken tyres fulfil all the rigorous standards for premium tyres. The tests also regularly confirm Falken's status as one of the brands offering top value for money. Here is a selection of our test results.

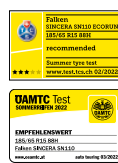
### EUROWINTER HS02

### ZIEX ZE320



### e. ZIEX

### SINCERA SN110



### AZENIS FK520

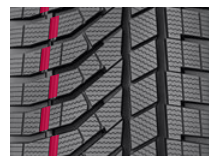


## MADE FOR WINTER ROAD CONDITIONS

In order to satisfy the high stresses and demands of the cold season, winter tyres are composed of a variety of high quality materials and utilise several innovative design features.

As an example, the **EUROWINTER HS02 PRO**:

### PROGRESSIVE PATTERN FEATURES



- Staggered step-down grooves
- Pattern grooves grip and compress snow and improve self-cleaning
- Ensure exceptional grip and precise handling on snowy roads

### DOUBLE ZIG-ZAG GROOVES



- Specialised design of the main grooves for optimal snow grip
- Zig-Zag grooves generate additional gripping edges to guarantee high traction in wet and slush conditions
- Improved contact between snow-covered roads and tyre for outstanding handling and braking properties

### SYNERGY IN PATTERN LAYOUT



- Combined pattern design for balanced performance in all wintry conditions
- Inside optimised for snow and slush
- Outside engineered for dry and wet performance
- Intelligent interaction of both profile areas for a sporty driving experience with high safety buffer



**5-YEAR FALKEN  
GUARANTEE**

"Falken tyres are developed and produced to the highest quality standards. Your trust in the quality of our services is the basis for our success." [www.falkentyre.com/en/service/warranty](http://www.falkentyre.com/en/service/warranty)



# HIGH-TRACTION PCR AND SUV WINTER TYRES

A winter tyre must perform under the most diverse weather conditions, at temperatures from 7° Celsius to far below (where summer tyres lose much of their grip) and cold, wet, icy or snowy terrain in the city or countryside, on motorways or mountain passes. You are fully equipped for winter with the Falken EUROWINTER HS02 PRO and EUROWINTER HS02.



## EUROWINTER HS02 PRO

New-generation dynamic winter performance tyre for cars and SUVs



## EUROWINTER HS02

Next-generation winter performance tyre



## EUROWINTER HS01

Superior performance in any winter conditions

For more product details, see pages 18–21.

Winter Performance	Tread Life	Dry Performance
Wet Performance	Fuel Efficiency	Dynamic Response
Comfort	Low Noise	



© Volkswagen 2022

## EUROWINTER HS02 PRO

The advanced compound of the EUROWINTER HS02 PRO achieves the perfect balance between snow and wet grip and can handle all types of winter conditions. The ideal choice for sporty cars with high speed and high load index, like SUVs and CUVs.

### FEATURES AND BENEFITS

- Up to 14% reduced tyre weight for better rolling resistance and saving of resources
- Asymmetrical three-zone pattern increases water drainage up to 101 l/s\* and improves performance on wet roads
- Outstanding winter compound combined with Miura-Ori 3D sipes in multi-directional placing (MDS) provide incredible balance between snow, wet and dry grip
- Advanced 4D-Nano Design technology for better wet grip, lower fuel usage and longer tyre life span
- Aerodynamic sidewall design with new Nano Black sidewall lettering for a modern appearance

### RANGE OF SIZES

- 82 Sizes
- 16–21 Inches
- Series 35–70
- Speed index: H/V/W

See page 8–9 for detailed information.

### ORIGINAL EQUIPMENT

Mercedes-Benz G-Class

### PERFORMANCE ADVANTAGES

- Dry Performance
- Wet Performance
- Winter Performance
- Comfort
- Dynamic Response
- Low Noise



\*Tested Size: 245/45R18

# EUROWINTER HS02 PRO



## CAR AND SUV WINTER TYRES

Tyre sizes	LI / SI	CAR	SUV				dB	Comments
<b>SERIES 35</b>								
255/35R18	94V XL	✓		D	B	B	72	MFS, M+S,
235/35R19	91W XL	✓		D	B	B	72	MFS, M+S,
245/35R19	93V XL	✓		D	B	B	72	MFS, M+S,
245/35R19	93W XL	✓		D	B	B	72	MFS, M+S,
255/35R19	96V XL	✓		D	B	B	72	MFS, M+S,
255/35R19	96W XL	✓		D	B	B	72	MFS, M+S,
245/35R20	95W XL	✓		D	B	B	72	MFS, M+S,
255/35R20	97W XL	✓		D	B	B	72	MFS, M+S,
265/35R20	99W XL	✓		D	B	B	72	MFS, M+S,
295/35R21	107W XL		✓	D	B	A	72	MFS, M+S,
<b>SERIES 40</b>								
225/40R18	92V XL	✓		D	B	B	72	MFS, M+S,
225/40R18	92W XL	✓		D	B	B	72	MFS, M+S,
235/40R18	95W XL	✓		D	B	B	72	MFS, M+S,
245/40R18	97V XL	✓		D	B	B	72	MFS, M+S,
225/40R19	93V XL	✓		D	B	B	72	MFS, M+S,
225/40R19	93W XL	✓		D	B	B	72	MFS, M+S,
235/40R19	96V XL	✓		D	B	B	72	MFS, M+S,
235/40R19	96W XL	✓		D	B	B	72	MFS, M+S,
265/40R19	102W XL	✓		D	B	B	72	MFS, M+S,
255/40R20	101W XL	✓		D	B	B	72	MFS, M+S,
275/40R20	106W XL		✓	D	B	B	73	MFS, M+S,
285/40R20	108W XL		✓	C	B	A	72	MFS, M+S,
295/40R20	110W XL		✓	D	B	A	72	MFS, M+S,
<b>SERIES 45</b>								
225/45R17	94V XL	✓		D	B	B	70	MFS, M+S,
235/45R17	97V XL	✓		D	B	B	70	MFS, M+S,
245/45R17	99V XL	✓		D	B	B	72	MFS, M+S,
225/45R18	95V XL	✓		D	B	B	70	MFS, M+S,
235/45R18	98V XL	✓		D	B	B	70	MFS, M+S,
245/45R18	100V XL		✓	D	B	B	70	MFS, M+S,
255/45R18	103V XL	✓		D	B	B	72	MFS, M+S,
225/45R19	96V XL	✓		D	B	B	71	MFS, M+S,
235/45R19	99W XL	✓		C	B	B	71	MFS, M+S,
245/45R19	102W XL	✓		D	B	B	71	MFS, M+S,
255/45R19	104V XL		✓	C	B	B	72	MFS, M+S,
255/45R19	104W XL	✓		D	B	B	72	MFS, M+S,
275/45R19	108V XL	✓		D	B	B	72	MFS, M+S,
245/45R20	103W XL	✓		C	B	B	71	MFS, M+S,
255/45R20	105V XL	✓		D	B	B	72	MFS, M+S,
255/45R20	105W XL	✓		C	B	B	72	MFS, M+S,
265/45R20	108V XL	✓		D	B	B	72	MFS, M+S,
265/45R20	108W XL	✓		C	B	B	72	MFS, M+S,
275/45R20	110V XL	✓		D	B	B	73	MFS, M+S,
275/45R20	110W XL	✓		C	B	B	73	MFS, M+S,
285/45R20	112V XL	✓		C	B	B	73	MFS, M+S,
295/45R20	114V XL	✓		C	B	B	73	MFS, M+S,

# EUROWINTER HS02 PRO



## CAR AND SUV WINTER TYRES

Tyre sizes	LI / SI	CAR	SUV				dB	Comments
<b>SERIES 50</b>								
225/50R17	98V XL	✓		D	B	B	71	MFS, M+S,
225/50R18	99V XL	✓		D	B	B	70	MFS, M+S,
235/50R18	101V XL		✓	D	B	B	72	MFS, M+S,
245/50R18	104V XL	✓		C	B	B	70	MFS, M+S,
235/50R19	103V XL		✓	D	B	B	71	MFS, M+S,
245/50R19	105V XL	✓		C	B	B	72	MFS, M+S,
255/50R19	107V XL		✓	D	B	B	72	MFS, M+S,
275/50R19	112V XL	✓		C	B	B	73	MFS, M+S,
235/50R20	104W XL	✓		C	B	B	71	MFS, M+S,
255/50R20	109V XL	✓		C	B	B	72	MFS, M+S,
275/50R20	113V XL	✓		C	B	B	71	MFS, OE MB G-Class, M+S,
235/50R21	101V		✓	D	B	B	70	MFS, M+S,
<b>SERIES 55</b>								
225/55R16	99V XL	✓		D	C	B	70	M+S,
225/55R17	101V XL	✓		C	B	B	70	M+S,
235/55R17	103V XL	✓		D	B	B	70	M+S,
225/55R18	102V XL		✓	C	B	B	71	M+S,
235/55R18	104V XL	✓		C	B	B	70	M+S,
255/55R18	109V XL	✓		C	B	B	71	M+S,
225/55R19	103V XL	✓		C	B	B	71	M+S,
235/55R19	105W XL	✓		C	B	B	71	M+S,
255/55R19	111V XL	✓		C	B	B	72	M+S,
265/55R19	113V XL		✓	B	C	B	71	OE MB G-Class, M+S,
235/55R20	105V XL		✓	C	B	B	72	M+S,
<b>SERIES 60</b>								
235/60R16	100H		✓	D	B	B	72	M+S,
225/60R17	103V XL	✓		D	B	B	70	M+S,
235/60R17	106V XL	✓		D	B	B	71	M+S,
225/60R18	104V XL	✓		C	B	B	70	M+S,
235/60R18	107V XL	✓		C	B	B	70	M+S,
255/60R18	112V XL	✓		D	B	B	72	M+S,
265/60R18	114V XL	✓		C	B	B	72	M+S,
265/60R18	114V XL	✓		B	C	B	72	OE MB G-Class, M+S,
235/60R19	107V XL	✓		C	B	B	71	M+S,
<b>SERIES 65</b>								
225/65R17	106V XL	✓		C	B	B	71	M+S,
235/65R17	108V XL	✓		C	B	B	71	M+S,
245/65R17	111V XL	✓		C	B	B	72	M+S,
255/65R17	114H XL	✓		C	B	B	72	M+S,
<b>SERIES 70</b>								
235/70R17	109H XL		✓	D	B	B	72	M+S,

LI = Load index SI = Speed index MFS = Rim Protection

All labelling and technical information are subject to industry standard tolerances.

We reserve the right to make technical changes. Labelling information may be subject to change.

Fuel efficiency°

External rolling noise°

Wet grip°

Value (expressed in dB(A)) for external rolling noise°

°In accordance with EU regulation 2020/740



## EUROWINTER HS02

European winters differ (enormously) in their climatic conditions; northern regions and mountains with snow or other areas with rain, icy roads or dry, crispy cold. A winter tyre must tackle all these diverse conditions, while delivering uncompromising performance in terms of safety, mileage and ride comfort.

### FEATURES AND BENEFITS

- Up to 9% reduced tyre weight for better rolling resistance and lower resource consumption
- Symmetrical V pattern increases water drainage up to 78 l/s\* and boosts aquaplaning abilities
- Miura-Ori 3D sipes provide safe braking performance and more traction on snow covered roads
- Additional interlocking 3D sipes in the shoulder for improved block stiffness and driving stability
- Advanced 4D-Nano Design Technology is used for better wet grip, lower fuel usage and longer tyre lifespan

### RANGE OF SIZES

- 49 Sizes
- 14–20 Inches
- Series 45–70
- Speed index: T/H/V

See page 11–12 for detailed information.

### PERFORMANCE ADVANTAGES

- Dry Performance
- Wet Performance
- Winter Performance
- Comfort
- Dynamic Response
- Low Noise



## EUROWINTER HS02



### CAR AND SUV WINTER TYRES

Tyre sizes	LI / SI	CAR	SUV				dB	Comments
<b>SERIES 45</b>								
195/45R16	84V XL	✓		D	B	A	69	MFS, M+S,
205/45R16	87H XL	✓		D	B	A	69	MFS, M+S,
205/45R17	88V XL	✓		D	B	A	69	MFS, M+S,
<b>SERIES 50</b>								
195/50R16	88V XL	✓		D	B	A	69	M+S,
215/50R17	95V XL	✓		D	B	A	69	MFS, M+S,
215/50R18	92V		✓	D	B	A	69	MFS, M+S,
<b>SERIES 55</b>								
175/55R15	77T		✓	D	B	B	69	M+S,
185/55R15	82H		✓	D	B	B	70	M+S,
195/55R16	87H		✓	D	B	A	69	M+S,
195/55R16	91V XL	✓		D	B	A	69	M+S,
205/55R16	91H		✓	D	B	A	69	M+S,
205/55R16	94V XL	✓		C	B	A	69	M+S,
215/55R16	93H		✓	C	B	A	69	M+S,
215/55R16	97H XL	✓		C	B	A	69	M+S,
205/55R17	95V XL	✓		C	B	B	70	M+S,
215/55R17	98V XL	✓		C	B	B	70	M+S,
195/55R20	95H XL	✓		D	B	A	69	M+S,
<b>SERIES 60</b>								
185/60R14	82T		✓	D	B	B	69	M+S,
155/60R15	74T		✓	D	B	B	69	M+S,
165/60R15	77T		✓	D	B	B	69	M+S,
175/60R15	81T		✓	D	B	B	70	M+S,
185/60R15	84T		✓	D	B	B	69	M+S,
185/60R15	88T XL	✓		D	B	B	69	M+S,
195/60R15	88H		✓	D	B	A	69	M+S,
195/60R16	89H		✓	D	B	A	69	M+S,
205/60R16	92H		✓	D	B	A	69	M+S,
205/60R16	96H XL	✓		D	B	A	69	M+S,
215/60R16	99H XL	✓		C	B	B	70	M+S,
195/60R17	90H		✓	C	B	A	69	M+S,
215/60R17	100V XL		✓	D	B	B	70	M+S,
<b>SERIES 65</b>								
155/65R14	75T		✓	D	B	B	69	M+S,
165/65R14	79T		✓	D	B	B	70	M+S,
175/65R14	82T		✓	D	B	B	70	M+S,
175/65R14	86T XL	✓		D	B	B	70	M+S,
185/65R14	86T		✓	D	B	B	69	M+S,
145/65R15	72T		✓	D	B	B	69	M+S,
175/65R15	84T		✓	D	B	B	69	M+S,

LI = Load index SI = Speed index MFS = Rim Protection

All labelling and technical information are subject to industry standard tolerances.

We reserve the right to make technical changes. Labelling information may be subject to change.

Fuel efficiency°

External rolling noise°

Wet grip°

dB Value (expressed in dB(A)) for external rolling noise°

°In accordance with EU regulation 2020/740

## EUROWINTER HS02

### CAR AND SUV WINTER TYRES



Tyre sizes	LI / SI	CAR	SUV				dB	Comments
<b>SERIES 65</b>								
185/65R15	88T	✓		D	B	B	70	M+S,
185/65R15	92T XL	✓		D	B	B	69	M+S,
195/65R15	91T	✓		C	B	A	69	M+S,
195/65R15	91H	✓		C	B	A	69	M+S,
195/65R15	95T XL	✓		C	B	A	69	M+S,
215/65R16	98H		✓	D	B	B	70	M+S,
175/65R17	87H	✓		D	B	B	69	M+S,
215/65R17	103V XL		✓	C	B	B	70	M+S,
<b>SERIES 70</b>								
165/70R14	81T	✓		D	B	B	70	M+S,
175/70R14	84T	✓		D	B	B	69	M+S,
175/70R14	88T XL	✓		D	B	B	69	M+S,
215/70R16	104H XL		✓	C	B	B	70	M+S,

## EUROWINTER HS01

### CAR AND SUV WINTER TYRES



Tyre sizes	LI / SI	CAR	SUV				dB	Comments
<b>SERIES 40</b>								
215/40R17	87V XL	✓		E	B	B	71	MFS, M+S,
255/40R18	99V XL	✓		D	B	B	72	MFS, M+S,
255/40R18	99W XL	✓		D	B	B	72	MFS, M+S,
<b>SERIES 45</b>								
215/45R16	90V XL	✓		D	B	B	72	MFS, M+S,
215/45R17	91V XL	✓		D	B	B	72	MFS, M+S,
225/45R17	94H XL	✓		D	B	B	72	MFS, M+S,
215/45R18	93V XL	✓		D	B	B	72	MFS, M+S,
225/45R18	95W XL	✓		D	B	B	72	MFS, M+S,
245/45R18	100W XL		✓	D	B	B	72	MFS, M+S,
215/45R20	95T XL	✓		D	B	B	71	MFS, M+S,
<b>SERIES 50</b>								
205/50R17	93V XL	✓		D	B	B	72	MFS, M+S,
215/50R19	93T	✓		D	B	B	70	M+S,
<b>SERIES 55</b>								
185/55R14	80T	✓		D	B	B	70	M+S,
195/55R15	85H	✓		D	B	B	70	M+S,
205/55R15	88H	✓		D	B	B	70	M+S,
185/55R16	83T	✓		D	B	B	70	M+S,
245/55R17	106V XL	✓		D	B	B	72	M+S,
205/55R19	97V XL	✓		C	B	B	71	M+S,
<b>SERIES 60</b>								
205/60R15	91H	✓		D	B	B	70	M+S,
175/60R16	82H	✓		D	B	B	70	M+S,

## EUROWINTER HS01

### CAR AND SUV WINTER TYRES



Tyre sizes	LI / SI	CAR	SUV				dB	Comments
<b>SERIES 60</b>								
185/60R16	86H	✓		D	B	B	70	M+S,
225/60R16	102H XL		✓	D	B	B	72	M+S,
205/60R17	93H	✓		D	B	B	71	M+S,
175/60R18	85H	✓		D	B	A	68	M+S,
<b>SERIES 65</b>								
165/65R15	81T	✓		D	B	B	70	M+S,
205/65R15	94H	✓		D	B	B	70	M+S,
205/65R16	95H	✓		C	B	B	70	M+S,

## EUROWINTER HS01 RUNFLAT

### CAR AND SUV WINTER TYRES



Tyre sizes	LI / SI	CAR	SUV				dB	Comments
<b>SERIES 35</b>								
275/35RF21	99V	✓		E	C	B	71	MFS, M+S,
<b>SERIES 40</b>								
245/40RF19	94V	✓		D	C	B	71	MFS, M+S,
255/40RF19	96V	✓		E	C	B	71	MFS, M+S,
275/40RF20	102V		✓	E	C	B	71	MFS, M+S,
245/40RF21	96V	✓		E	C	B	71	MFS, M+S,
<b>SERIES 45</b>								
225/45RF17	91H	✓		E	C	B	71	MFS, M+S,
245/45RF18	100V XL		✓	E	C	B	71	MFS, M+S,
245/45RF20	99V		✓	E	C	B	71	MFS, M+S,
<b>SERIES 50</b>								
205/50RF17	93H XL	✓		E	C	B	71	MFS, M+S,
225/50RF17	94V	✓		E	C	B	71	MFS, M+S,
245/50RF18	100H	✓		D	C	B	71	MFS, M+S,
245/50RF19	101V		✓	E	C	A	68	MFS, M+S,
<b>SERIES 55</b>								
205/55RF16	91H	✓		E	C	B	71	M+S,
205/55RF17	91H	✓		E	C	B	71	M+S,
225/55RF17	97H	✓		E	C	B	71	M+S,
<b>SERIES 60</b>								
205/60RF16	92H	✓		E	C	B	71	M+S,

LI = Load index SI = Speed index MFS = Rim Protection

All labelling and technical information are subject to industry standard tolerances.

We reserve the right to make technical changes. Labelling information may be subject to change.

Fuel efficiency\*

External rolling noise\*

Wet grip\*

dB Value (expressed in dB(A)) for external rolling noise\*

\*In accordance with EU regulation 2020/740





## EUROWINTER VAN01

Falken winter tyres for light commercial vehicles, transporters and vans offer excellent winter dependability and outstanding performance in wet weather conditions.

### FEATURES AND BENEFITS

- Innovative tread compound
- 4D-Nano Design technology
- Densely packed 3D sipes
- Improved fuel savings
- Highly durable casing design
- Extended tyre life
- Quieter ride and increased driver comfort

### RANGE OF SIZES

- 31 Sizes
- 14 – 17 Inches
- Series 55 – 75
- Speed index: R/S/T/H

See page 15 for detailed information.

### PERFORMANCE ADVANTAGES

- Winter Performance
- Wet Performance
- Comfort
- Tread Life
- Low Noise



## EUROWINTER VAN01



### LIGHT TRUCK WINTER TYRES

Tyre sizes	LI / SI					Comments
<b>SERIES 55</b>						
225/55R17C	109/107T		C	A	B	73 M+S,
<b>SERIES 60</b>						
195/60R16C	99/97T		D	A	B	72 M+S,
215/60R16C	103/101T		C	A	B	73 M+S,
225/60R16C	105/103T		C	A	B	73 M+S,
215/60R17C	109/107T		C	A	B	72 M+S,
225/60R17C	107/105H		C	A	B	72 M+S,
235/60R17C	117/115S		C	A	B	73 M+S,
<b>SERIES 65</b>						
175/65R14C	90/88T		D	A	B	72 M+S,
205/65R15C	102/100T		D	A	B	72 M+S,
215/65R15C	104/102T		C	A	A	70 M+S,
195/65R16C	104/102T		D	A	B	72 M+S,
205/65R16C	107/105T		C	A	B	72 M+S,
215/65R16C	109/107T		C	A	B	72 M+S,
225/65R16C	112/110R		C	A	B	72 M+S,
235/65R16C	115/113R		C	A	B	72 M+S,
235/65R16C	121/119R		C	A	B	72 M+S,
<b>SERIES 70</b>						
165/70R14C	89/87R		D	A	B	72 M+S,
175/70R14C	95/93T		D	A	B	72 M+S,
195/70R15C	104/102R		D	A	B	72 M+S,
205/70R15C	106/104R		D	A	B	72 M+S,
215/70R15C	109/107R		C	A	B	72 M+S,
225/70R15C	112/110R		C	A	B	72 M+S,
225/70R17C	108/106T		C	A	B	73 M+S,
<b>SERIES 75</b>						
185/75R16C	104/102R		D	A	B	72 M+S,
195/75R16C	107/105R		C	A	B	72 M+S,
205/75R16C	110/108R		C	A	B	72 M+S,
205/75R16C	113/111R		C	B	B	73 M+S,
215/75R16C	113/111R		C	A	B	72 M+S,
215/75R16C	116/114R		C	A	B	70 M+S,
225/75R16C	118/116R		C	B	B	73 M+S,
225/75R16C	121/120R		B	B	B	73 M+S,

LI = Load index SI = Speed index

All labelling and technical information are subject to industry standard tolerances.

We reserve the right to make technical changes. Labelling information may be subject to change.

Fuel efficiency°

External rolling noise°

Wet grip°

Value (expressed in dB(A)) for external rolling noise°

°In accordance with EU regulation 2020/740



# SUSTAINABILITY

Falken has always carved out its position as an **eco-friendly tyre manufacturer**, and will continue to step up its attention to environmental protection. Falken and its parent company, Sumitomo Rubber Industries (SRI), will play a key role in supporting the tyre industry's progress towards greater sustainability for the generations to come. Falken-manufactured tyres have been made from **97 per cent non-fossil materials** since 2007. The company has declared its target of using only sustainable materials for its long-life tyres by 2050.

## OUR COMPANY GOALS



### WORLD'S LARGEST ROOFTOP SOLAR PANEL INSTALLATION

Sumitomo Rubber Industries Ltd. is installing the world's largest solar panel system on the roof of one of its production facilities. **100,000 square metres in area**, the system is being installed on a factory in Thailand, where products include tyres for the European market.

Alongside a further gas cogeneration system and biomass electric power system at the factory, this investment will ensure that in future the facility will be powered by **100 per cent renewable energy**.

### ISO 50001 CERTIFICATION FOR PRODUCTION FACILITY

The production facility in the Turkish city of Çankırı, Anatolia, holds **ISO 50001 certification**, and is SRI's third location with this qualification after China and Brazil.

The facility in Turkey set an array of modernisation measures in place to achieve the certification, including installation of high-efficiency hydro-powered cooling pumps, sensor-activated LED lighting and replacement of aluminium cooling fans with FRP (fibre-reinforced plastic) fans for use only on demand.

### FOCUS ON CO<sub>2</sub>-NEUTRAL FUTURE

Falken and its parent company, Sumitomo Rubber Industries (SRI), are working hard on reducing emissions of carbon dioxide – a known greenhouse gas – from their operations, including using hydrogen as an energy source. This measure is hailed as **revolutionising the production process**.



For more information and current news about our journey to a sustainable future, visit our website: <https://www.falkentyre.com/en/company/sustainability>

## PRODUCT TARGETS OF OUR TYRES



### ENVIRONMENTAL ASPECTS REST ON THREE TECHNOLOGY PILLARS

Alongside security technology and state-of-the-art simulation and analysis methods, SRI uses ENASAVE technologies as a third pillar to deliver positive environmental contributions. Cutting-edge supercomputers are used to analyse the behaviour of tyre compounds under realistic dynamic driving conditions, providing insights into processes at the nano level.

This enables significant progress to be made in improving tyre grip, as well as enhancing other characteristics with environmental impact: boosting mileage and lowering rolling resistance. The results are positive: lower levels of tyre wear particles in the environment and lower consumption of resources.

### LESS IS MORE – TOP MARKS FOR WEAR

Two Falken products came out of the ADAC tyre wear tests with flying colours – and **top marks**. Falken's development engineers hail these results as confirmation of their work and proof of the success of their 4D Nano and Advanced 4D Nano design processes.

As tyre wear ends up in the environment as fine particulate, any possibility for its reduction is desirable. In addition, consumers value lower wear because their tyres need to be replaced less often.

### BIOMASS

Around **25 per cent** of Falken tyres are currently comprised of biomass. On the way to achieving full sustainability in its tyres, Falken aims to increase this percentage to 30 per cent by 2030 alongside raising the proportion of recycled material to ten per cent.

## CIRCULAR ECONOMY



### JOINT VENTURE FOR WASTE RECYCLING SOLUTIONS

Three Sumitomo companies and a US recycling specialist are combining their expertise to accelerate Sumitomo's circular economy efforts for raw materials and thus develop **viable waste recycling solutions**. In addition to **reducing resource consumption**, development focused on minimising carbon dioxide, known to be a major greenhouse gas.

The aim of the partnership is to leverage LanzaTech's biorecycling technology to transform waste tyre materials into valuable raw components, notably isoprene, for further rubber production.



For a full account of the contribution to a circular economy concept, visit our website at: <https://www.falkentyre.com/en/press/article/recycling-joint-venture>

# PRODUCT DETAILS - HIGHLIGHTS

## PRODUCTION AND DEVELOPMENT

Behind Falken tyres is a powerful combination of cutting-edge technologies in tyre development and state-of-the-art development environments. This wealth of expertise enables Falken to supply premium quality products with a price /performance ratio that is almost unparalleled on the market, without compromising on ride comfort and safety.



### ADVANCED 4D-NANO DESIGN

Advanced 4D-Nano Design technology is the result of pioneering research and findings in molecular structures. It enables savings in fuel consumption of up to five per cent to be achieved compared to conventional tyre models, extends durability and mileage and significantly improves the tyre's performance in wet conditions.

**EUROWINTER HS02 PRO**

See page 7 – 9

**EUROWINTER HS02**

See page 10 – 12

**EUROWINTER HS01 RUNFLAT**

See page 13



### 4D-NANO DESIGN - FALKEN'S INNOVATIVE COMPOUND DEVELOPMENT PROGRAM

Pioneering 4D-Nano Design technology enables our engineers to simulate the complex interactions of tyre compound components at the nanoscale.

**EUROWINTER HS01**

See page 12 – 13

**EUROWINTER VAN01**

See page 14 – 15

## PRODUCT-FEATURE

Special product features enhance the safety of Falken tyres still further – such as unique tread design that maximises grip in snowy and icy conditions, as well as run-flat properties.



### RUNFLAT TECHNOLOGY

Runflat tyres are indicated by the RF in their tyre size. Their reinforced sidewalls reduce tyre deformation, thus allowing up to 80 km of further travel at speeds of up to 80 km/h.

**EUROWINTER HS01 RUNFLAT**

See page 13



### MDS - MULTI-DIRECTIONAL SIPE POSITIONING

The pattern design feature of Multi-Directional Sipe positioning delivers superb traction and braking forces at virtually any steering angle and ensures solid handling, especially on snowy roads.

**EUROWINTER HS02 PRO**

See page 7 – 9

**EUROWINTER HS02**

See page 10 – 12



### SIPE TECHNOLOGY

Traction-boosting 3D sipe technology enhances grip in wet, wintry or muddy conditions and optimises block rigidity to prevent irregular tread wear.

**EUROWINTER HS02 PRO**

See page 7 – 9

**EUROWINTER HS02**

See page 10 – 12



### NANO BLACK

The sophisticated concave-convex design reduces light reflection and increases blackness.

**EUROWINTER HS02 PRO**

See page 7 – 9

# PRODUCT DETAILS - HIGHLIGHTS

## PRODUCT-FEATURE



### ADAPTIVE CONSTANT PRESSURE - FOR A MORE UNIFORM PRESSURE DISTRIBUTION

This ground-breaking tread concept results in a perfect tyre footprint structure by evenly distributing pressure throughout the contact patch. This optimised tyre-road

footprint delivers enhanced grip and driving dynamics.

**EUROWINTER HS01**  
See page 12 – 13

**EUROWINTER VAN01**  
See page 14 – 15



### LIGHT WEIGHT CONSTRUCTION

Light weight delivers lower rolling resistance plus improved handling stability.

**EUROWINTER HS02 PRO**  
See page 7 – 9

**EUROWINTER HS02**  
See page 10 – 12

**EUROWINTER VAN01**  
See page 14 – 15



### OPTIMISED CONTACT PATCH

The optimised contact patch helps to improve life performance and reduce uneven wear. It suppresses increased ground pressure at rib ends and maintains uniform ground pressure within each rib.

**EUROWINTER HS02**  
See page 10 – 12



### 3D SIPES

On icy roads, 3D sipes improve the contact patch by gripping the road surface. This boosts the edge effect, enhances traction on ice and delivers excellent grip in the wet as well as improving handling in the dry.

**EUROWINTER HS02 PRO**  
See page 7 – 9

**EUROWINTER HS02**  
See page 10 – 12

**EUROWINTER VAN01**  
See page 14 – 15



### CHAOTIC ARRAY

Random tread pattern over one pitch length reduces pattern noise during driving.

**EUROWINTER HS02 PRO**  
See page 7 – 9

**EUROWINTER HS02**  
See page 10 – 12

**EUROWINTER VAN01**  
See page 14 – 15



### ROUND PROFILE

Uniform tyre deflection mitigates localised tyre deformation stress, and thus minimises unnecessary fuel consumption when the tyre is under load. This reduces rolling resistance and improves handling stability and ride comfort.

**EUROWINTER HS02 PRO**  
See page 7 – 9

**EUROWINTER HS02**  
See page 10 – 12

**EUROWINTER VAN01**  
See page 14 – 15



### AERO DESIGN

The optimised tyre profile and smoother concave/convex tyre surface control air flow during driving and reduce driving resistance.

**EUROWINTER HS02 PRO**  
See page 7 – 9

**EUROWINTER HS02**  
See page 10 – 12



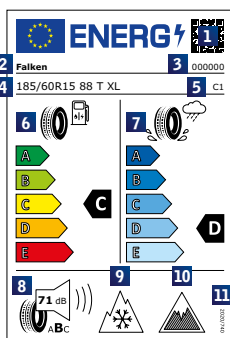
### INTERLOCKING SIPE

These sipes maintain pattern rigidity while maintaining the edge effect, for performance in both dry and snowy conditions.

**EUROWINTER HS02**  
See page 10 – 12

# EU LABELLING

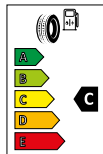
## TYRE LABEL REGULATION 2020/740 – CONTENTS



Tyre labels shown as example only

- 1 QR code (direct access to public section of EU product database EPREL)
- 2 Trade name or trademark of the supplier
- 3 Tyre type identifier / article number
- 4 Tyre size, load capacity and speed index
- 5 Tyre class
- 6 Fuel efficiency pictogram, scale and performance class
- 7 Wet grip pictogram, scale and performance class
- 8 External rolling noise pictogram, value (expressed in dB(A) and rounded to the nearest integer) and performance class
- 9 Snow grip pictogram
- 10 Ice grip pictogram
- 11 The serial number of this Regulation "2020/740"

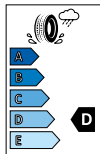
## TYRE LABEL CATEGORIES



### Rolling resistance

Rolling resistance denotes the force needed to keep the tyre rolling. Rolling resistance information is shown at the top left of the EU tyre label. The label

displays a pictogram of a tyre with a fuel pump and the tyre rating (A to E).



### Wet grip

The wet grip label shows the tyre's grip during braking in wet conditions. The information is shown at the top right of the

EU tyre label. The label displays a pictogram of a tyre and a water droplet and the tyre rating (A to E).



### Noise emission

The noise emissions of the tyre are shown in decibels.

Tyres with A rating fall below the limit by 3 dB(A) or more; B-rated tyres fulfil the limits defined for the future. C-rated tyres are below the current permissible limits.



### Snow & ice grip

Tyres that are suitable for extreme winter conditions display the three peak mountain snowflake pictogram on the sidewall.

Nordic winter tyres for icy surfaces have an ice pictogram (C1 class vehicles only).

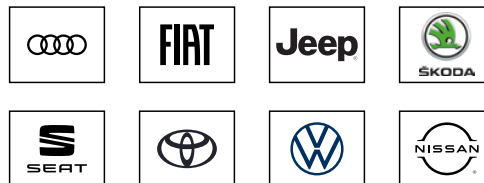
For more information on the labelling regulations for tyres, go to:

<https://eur-lex.europa.eu/legal-content/EN/TXT/?uri=CELEX%3A32020R0740>

© Falken Tyre Europe GmbH, As of: June 2024 – subject to change, errors and omissions excepted.

# ORIGINAL EQUIPMENT

Original Equipment – Designed for your car! Falken is constantly working for the perfect interaction between vehicle and tyre with leading vehicle manufacturers. Each car manufacturer defines a specific personality for each of its vehicle models while Falken provides the matching tyres for the vehicle. Find out about some of our current and past OE projects:



The Mercedes-Benz G-Class model is fitted with Falken WILDPEAK A/T AT3WA M0 and EUROALL SEASON AS210A M0 in size 265/60R18 and with AZENIS FK510 SUV M0 in size 265/55R19 as OEM tyres.



# OEM PARTNERSHIPS

Major car brands rely on the quality of Falken Tyres. But Falken's extensive range of tyre models and sizes is also available to car dealers – a further sales channel supplying Falken high-performance tyres for cars, light vans, SUVs and 4x4s.\*



\* Not available in all countries.



## **FALKEN TYRE EUROPE GMBH**


Berliner Straße 74-76  
63065 Offenbach am Main | Germany

**T.** +49(0)69 247 52 52-0

**F.** +49(0)69 247 52 52-12

**E.** [info@falkentyre.com](mailto:info@falkentyre.com)

 [facebook.com/falken](https://facebook.com/falken)

 [twitter.com/FalkenTyres](https://twitter.com/FalkenTyres)

 [falkentyres](https://instagram.com/falkentyres)

 [youtube.com/falkentyreeurope](https://youtube.com/falkentyreeurope)

 [falkentyre.com](https://falkentyre.com)

## **CUSTOMER SERVICE ORDER HOTLINE**

**T.** +49(0)69 247 52 52-52

**F.** +49(0)69 247 52 52-8852

**E.** [customerservice@falkentyre.com](mailto:customerservice@falkentyre.com)

## **TECHNICAL SERVICE**

**T.** +49(0)69 247 52 52-80

**F.** +49(0)69 247 52 52-14

**E.** [tech.service@falkentyre.com](mailto:tech.service@falkentyre.com)